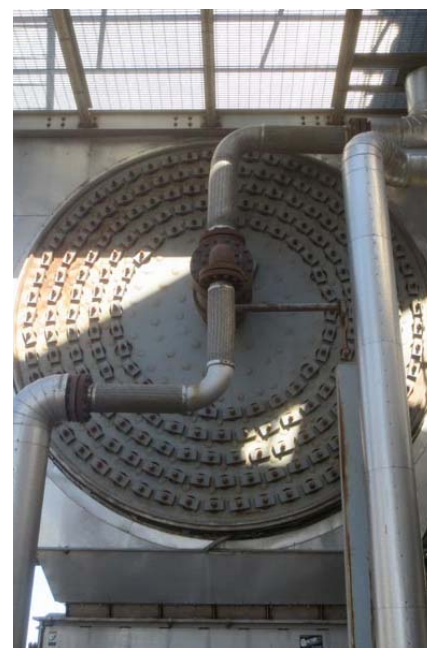


Rotary Steam Tube Dryer System (No. 1) Item PK-5410

Davenport Rotary Steam Tube Dryer No. 1 Size 11.75 ft dia x 70 ft. Model RSTD. Ser num 33007. Designed for evap capacity 29,397 #/hr. Material 304L. Driven by 100HP motor, Inverter Duty, 405T frame Motor, Sumitomo Reducer #PHD9075P3-LR-80, Falk LS - 1170T10, HS - 1080T10.

This is the complete #1 dryer system. Built 2007 then idled in early 2009. Essentially never produced—just run enough to prove out system, then idled.



Components shown here



Ancillary Equipment Pkg

All ancillary equipment for the steam tube rotary dryer system. Includes single shaft paddle mixer, ss drag conveyors, screw conveyors, cyclones and rotary valves, main fan, ss stack.

Item PK-5410

Cyclone - Dryer No. 1

High efficiency cyclone 139.5 inches OD x 11 ft ST/SD with 60 degree cone 118" - OAH = 250 inches. Capacity 29,444 ACFM, Material ss 304L. Mfg by Modern Welding
Item CY-5410



Components continued

Paddle Mixer ss

Single Shaft Paddle Mixer mfg by Barr-Rosin. Size 30" dia x 15' long, Material ss304L. Designed for capacity 77,546 pph WDG. Driven by 75 HP v-belt 1800 rpm.

Item MB-5410



ID Fan 150HP

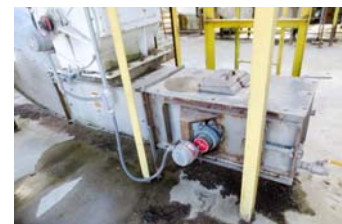
ID Fan 29,613 cfm at 23 " sp. Mfg by Northern Blower Design 4370, Size 4025-4425. Arrt 1S1, CCW rot. Fan material cs. Driven by Baldor 150 HP motor, RPM 1800, TEFC. Belt driven. Physical size skid 99" x 108" x 93" tall.

Item BF-5410

Drag Conveyor ss

Drag conveyor ss 304L. capacity 28,397 PPH HP 10 Material 304L. Used as 2nd Stage Product Transfer Drag Conveyor

Item CD-5416



Drag Conveyor ss

Essmueller Drag conveyor model 1818HF124, ss 304L. Capacity 49,149 PPH. Driven by 15 HP motor. Used as Elevating Transfer Drag Conveyor Item CD-5415



Screw Conveyor ss 10 ft

Screw Conveyor ss304 - 14" dia x 10' long. Designed for capacity 40,000 lb/hr. Model 098-1391-S-R. Used as Recycle Metering Screw

Item CS-5414

Screw Conveyor ss 8.5 ft

Screw conveyor 16" dia x 8'-6" long. Material ss304 housing and screw. Designed for capacity 77,546 PPH . Used as Drum Feed Conveyor from mixer - Dryer No. 1 Item CS-5411



Stack ss

Stack stainless steel, self supporting. Designed for 44761 ACFM. Approx. 4 ft diameter x 50 ft. Used as Dryer System Dump/Purge Stack.

Item ME-5440



Rotary Steam Tube Dryer System (No. 1) Item PK-5410

PK-5410

Dryer System 1 Components

Item #	Components	Size	Material	Motor
DR-5410	Rotary Steam-Tube Drying System	11'-9" dia x 70' long	SS304L	100 HP
MB-5410	Single-Shaft Paddle Mixer	30" dia x 15' long	SS304L	75 HP
	Mixer Discharge Screw Conveyor	24" dia x 10' long	SS304L	20 HP
CS-5411	Rotary Drum Feed Conveyor	24" dia x 10' long	SS304L	20 HP
CY-5410	Cyclone	75" dia	SS304L	
RV-5410	Cyclone Rotary Valve	20" dia	SS304L	2 HP
CS-5412	Hopper Outlet Screw Conveyor	30" dia x 25' long	SS304L	30 HP
CD-5415	Elevating Drag Conveyor	18" x 20" section	SS304L	10 HP
CS-5414	Recycle Screw Conveyor	18" dia x 10' long	SS304L	7.5 HP
BF-5410	Main Fan - ID Fan		MS	100 HP
	Interconnecting Ductwork			
	- Cold Air Duct	-approx. 45 ft long	MS	
	- Exhaust Duct	-approx. 25 ft long	SS304L	
	- Exhaust Duct	-approx. 65 ft long	SS304L	
CD-5416	2nd-Stage Transfer Drag Conveyor	12" x 16" section	SS304L	5 HP
RV-5411	Rotary Valve Discharge			
ME-5440	Stack			
CS-5104	Wet Cake Transfer Screw			
ME-5416	36" Motorized Damper			
ME-5448	48" Motorized Damper			

Terms: All equipment is sold As Is Where Is, Subject to prior sale and availability. All quotes are in US Dollars unless specifically noted otherwise. Description of the equipment - especially those relating to capacity, size, or condition - are stated as clearly as possible for information to the buyer or observer. The descriptions and representations cannot be taken as accurate. The buyer has the sole responsibility to determine size, capacity, capability, suitability, condition, or any other attribute pertaining to the piece of equipment represented or purchased. The assets are sold "As Is", "Where Is" and "with all faults" and except as explicitly stated in the Contract for Purchase. All warranties, including, without limitation, the warranties of merchantability, quality, and fitness for a particular purpose are hereby expressly excluded. Seller makes no representations or warranties as to design, condition, capacity, performance, or any other aspect of the asset.